

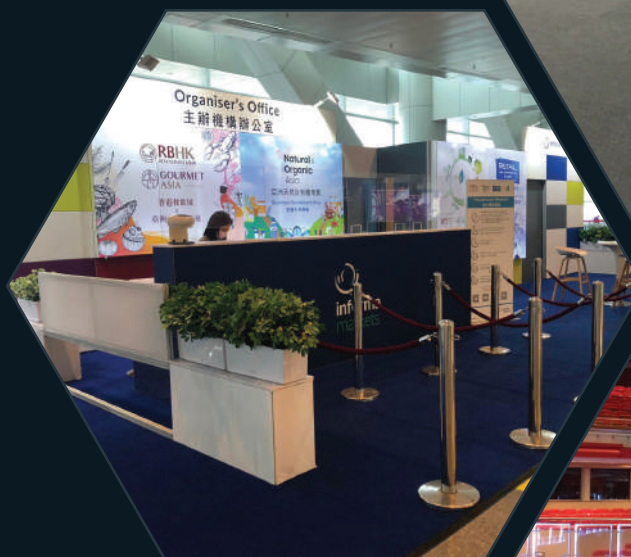
The expo tile

EXPO QUADRA

by SOMMER

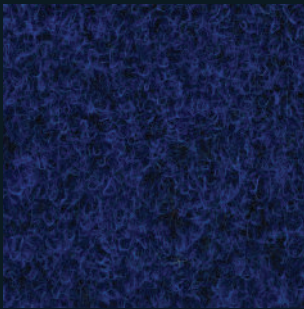
Carpet tile with a velour aspect
specially developed for **temporary uses**
such as fairs, congresses, theater stages...

- Lightweight and hardwearing
- Attractive and comfortable underfoot
- Easy to install
- Very good adherence
- Customizable and identifiable
- Easy to maintain
- Eco-designed and recyclable
- Easy to uplift and store

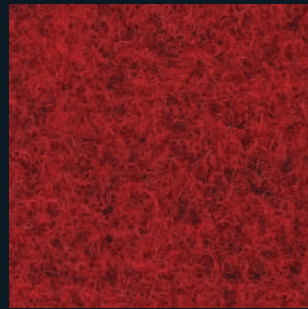


EXPOQUADRA

Giant tile
Guaranteed restocking



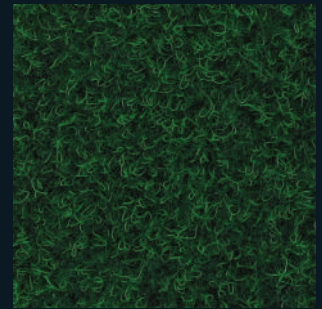
1624 Cobalt Blue



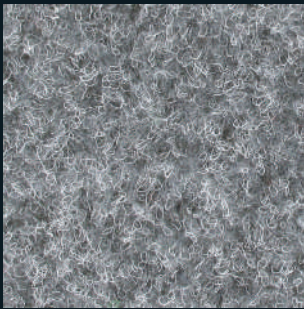
1632 Ruby Red



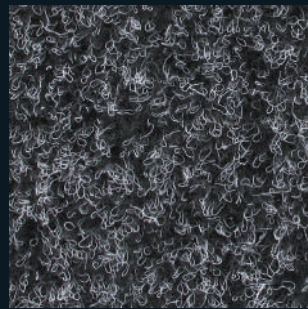
1486 Beige



1531 Amazonia Green



1015 Grey



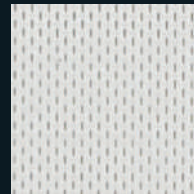
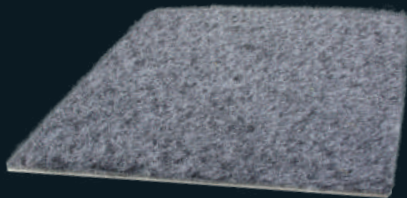
1005 Dark Grey



1020 Black



1040 Pure Solid Black



White backing,
unique on the market
leaving no marks on the floor

Colours		1 m x 1 m Cardboard kit 100 m ²	1 m x 1 m Palet of 100 m ²
1005	Dark Grey	GQASW1005B100	On order*: minimum 1000 m ² / color
1015	Grey	GQASW1015B100	
1020	Black	GQASW1020B100	
1040	Pure Solid Black	GQASW1040B100	
1486	Beige	GQASW1486B100	
1531	Amazonia Green	GQASW1531B100	
1624	Cobalt Blue	GQASW1624B100	
1632	Ruby Red	GQASW1632B100	



Cardboard kit B100
100 tiles



**On order:
Pallet**
100 tiles with
reinforced corners

References in bold are held in stock.
Minimum order : 100 m² / colors then multiples of 10.

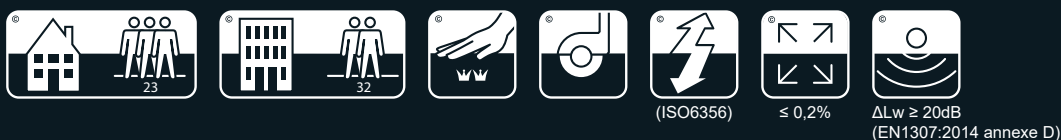
For more informations, please contact our sales team.



* Tolerance: < 10 000 m² : ± 10%
> 10 000 m² : ± 5%

Technical data

Surface: velours needlepunched textile tile
Backing: PLUS (polyolefin) white
Fibre: 100 % polypropylene
Total weight: 3200 g/m² ± 10%
Total thickness: 6 mm
Installation: loose laid
 To avoid the checkerboard effect lay tiles in the same direction (see arrow on the back of the tile).

As standard, batch number and arrows are printed on each tile.
 Possibility to add customer's name (20 characters maximum).
 1 to 2 markings / tile, black colour. Minimum of order: 1500 m².
 For more information, please contact our sales team.



<p>CE ASQUAL 20 EN 14041 : 2005 N° 0334-CPR-0201 DOP51</p> <p>UK CA BTTG 23 EN 14041 : 2005 N° 0338-CPR-5576 DOPUK51</p>	<p> Loose laid on any A2fl or A1fl class substrate</p> <p>Formaldehyde E1 No PCP</p>	<p>ÉMISSIONS DANS L'AIR INTÉRIEUR</p> <p></p> <p>*Information on the level of emissions of volatile substances in indoor air, with a risk of inhalation toxicity, on a class scale from A+ (very low emissions) to C (high emissions)</p>
--	---	---